
CANTU

Why Choose Cantu?

Our Showroom

Visit our 25,000 Sq. ft. showroom to see what sets Cantu apart. We offer a multitude of fully functioning products to allow you to experience our products in person. Expertly designed and featuring a luxury portfolio of unique plumbing, hardware and lighting fixtures, our showroom lets you explore the most innovative and beautiful collections from around the world.

Extensive Product Line up

We partner with the very best companies in luxury home products to provide a vast array of products for your kitchen and bathroom spaces. We also specialize in providing our customers with hardware, soft goods and custom wine storage that is superior in design, style and functionality.

Local and Family Owned

Our decades of experience provide us with the inside knowledge to understand different market trends and designs to find that unique piece you have been dreaming about. We have been working with a network of groundbreaking designers across the world since 1978 and continue to delight our customers with stunning, decorative plumbing and hardware ideas.

Exclusive Brands

Cantu is proud to offer exclusive brands available to only our customers. We work with the most trusted and exclusive companies to bring our customers products that have been carefully curated using our expert knowledge and experience.

Excellent Customer Support

We provide our customers with an experience that is as exceptional as the products we sell. Our experienced and knowledgeable staff work with you to ensure that your project is exactly what you are dreaming of from start to finish. Our commitment to customer service will ensure that your needs are not only met, but go beyond your expectations.



You Dream It, We'll Find It

Cantu Bathrooms and Hardware was born in 1978, conceived from a need for unique high design and quality plumbing and hardware that couldn't be found in North America. Not willing to lower our expectations, we pursued our goal and found the answer in Europe, where the booming design scene was taking place. After absorbing the emerging influences, we started importing our own selection of designs and made British Columbia part of the movement.



Cantu is the standard for innovation and quality in plumbing and hardware across western Canada. We work with premier suppliers to ensure that we always have an extensive and unique inventory of product that lead the most current trends and designs. Our experienced and knowledgeable staff work with you to ensure that your project is exactly what you are dreaming of, from start to finish.

We pride ourselves on customer service where our team members, management and on-site plumber are trained to provide you with outstanding technical and logistical support and make sure that your experience is as exceptional as the products that we sell. Come in and experience our fully functioning, interactive showroom and let us show you our extensive collection of bathroom, kitchen and hardware fittings.



Lighting by Cantu

Choosing lighting has never been so simple. In 2021, Cantu is excited to announce the launch of our highly anticipated lighting division. We are proud to introduce some of the most sought-after lighting products in the industry.

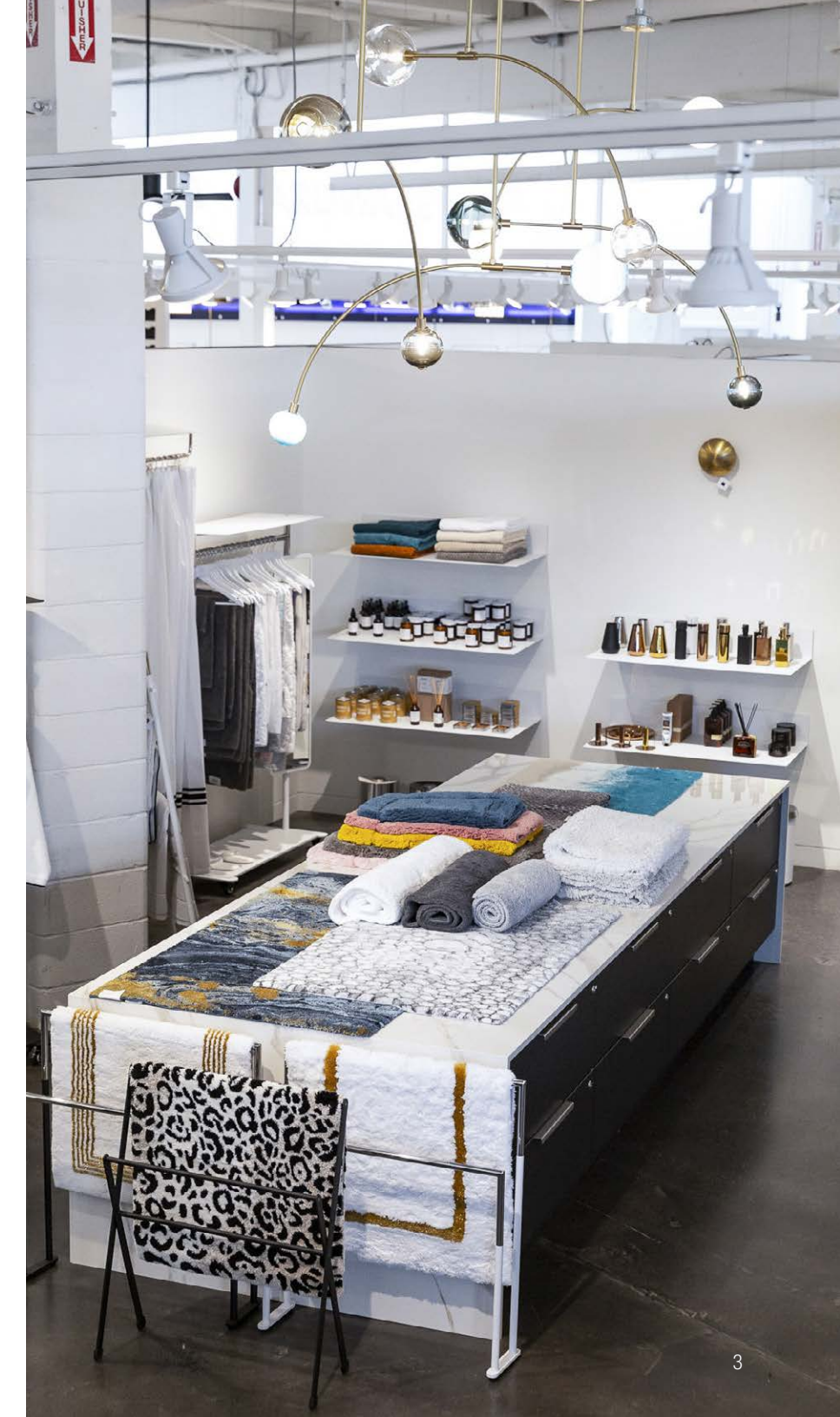
Discover the Lighting by Cantu: chandeliers, pendants, ceiling lights, ceiling fans with lights and other lighting fixtures. All the lighting you need from Cantu.



Soft Goods by Cantu

Today, we are honoured to present a wide variety of Soft Goods to enhance your living style. From towels, robes, rugs to candles, incense cones and much more, we proudly stand behind the quality of the products to improve and customize your bath experience.

Come visit our beautiful showroom by making an appointment today! Our team of design experts will gladly help you pick out the details to complete your dream space.





Contents

Gessi	6	Grohe	65
Forte Brands/MGS	8	Gerberit	66
BLU	10	Kartners	68
Waterworks	14	Steamist	69
The Galley	16	Mr.Steam	70
Fantini	18	Infinity Drain	72
Phylrich	20	ICO	74
Watermark	22	Electric Mirror	76
Vola	24	Sidler	77
Effegibi	26	Waterstone	78
Vitra Form	28	Julien	80
THG	29	Native Trails	81
Samuel Heath	30	Blanco	82
Sophstone	32	Franke	84
Stern Engineering	34	Colonial Bronze	85
Frost	38	Classic Brass	86
Dan Dryer	40	Reguitti	87
Americh	42	JWL	88
Keuco	44	Liquid Systems	89
Stone Forest	45	Water Street Brass	90
Dornbracht	46	Rocky Mountain Hardware	91
Toto	48	Baldwin	92
Aquabrass	50	Sun Valley Bronze	93
Simas	51	Emtek	94
Duravit	52	Top Knobs	96
IB	54	Buster & Punch	97
Laufen	56	SkLo	100
Victoria & Albert	58	Artemide	102
Bain Ultra	60	Visual Comfort	104
Wet Style	61	Slamp	106
DXV	62	Tech Lighting	107
Hansgrohe	63	Generation Lighting	108
Newport Brass	64	Monte Carlo	109



A Whole New Way to Experience Water

Innovative Hi-Fi system by Gessi pairs modern tech with retro stereo style

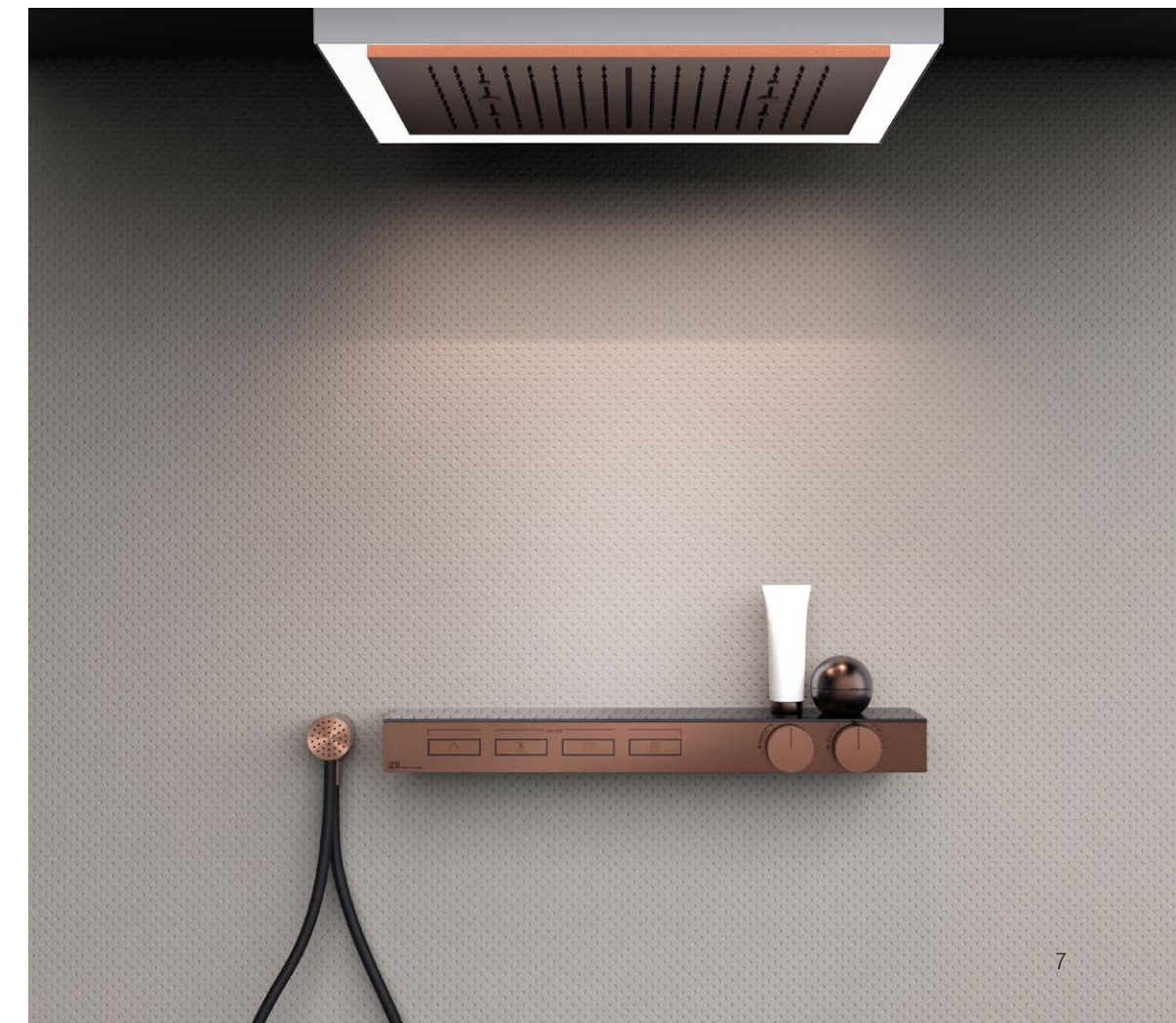
Gessi engages with water in a whole new way, injecting a sense of harmonious nostalgia with a thermostatic shower mixer that replicates the iconic look and feel of a stereo system from the 1980s and 1990s. Their new Hi-Fi Thermostatic Mixers go beyond retro-inspired aesthetics to offer high-fidelity technology for water delivery with accurate precision and perfect ergonomic design. Think of it as the control center for Gessi's signature Private Wellness® Program, a holistic design philosophy that imbues renewal and wellbeing into all aspects of daily life. Hi-Fi mixers are the pleasure of water amplified.

GESSI THE PRIVATE WELLNESS COMPANY

The Hi-Fi Collection is a unique addition to the bathroom furnishings market, providing an interactive interface to manipulate every aspect of the shower experience. The controls have been designed to mimic the tactile sensations of period stereo sets with clicking buttons and turning knobs, bringing the satisfaction of fine-tuning and the relaxation of music into a soothing wellness environment. Function buttons feature intuitive graphic icons for easy use, while the knobs have radial dials for precise control of water flow and temperature. Users may customize their preferred settings and enjoy an extraordinary shower with perfect control at all times.

Designed to fit neatly in any shower space, the Hi-Fi Collection is offered in three distinctive configurations. The square COMPACT design features one to three function buttons, while the rectangular LINEAR unit can accommodate up to four. The SHELF mixer houses its components inside a sleek box that attaches to the wall to form a convenient shelf for shampoo bottles and other necessities. This design is well suited for renovation projects or installations settings without sufficient space behind the shower wall.

Hi-Fi mixers control a wide range of luxurious options in Gessi's Private Wellness® Program, including hand sprayers and body jets, rainfall and waterfall shower heads, directional shower kits, atomizers, and much more. The systems are available in the full spectrum of Gessi finishes, such as copper, aged bronze, gold, matte black and polished nickel.





Introducing Heir.

A new collection and fresh attitude for the modern bathroom.

Organic in form yet precise in detail, Heir is forward design steeped in tradition. From base to spout, the clean lines and hexagonal shape breathe elegance and strength for everyday indulgence.

Sculpted columns and geometric lines are softened with deep, warm finishes of Polished Nickel or Brushed Brass. Bath fittings are complemented by Transitional style toilets and accessories. Created by the Forte Design Committee, Heir is crafted with meticulous attention to detail. Every piece treated with the utmost of care, Heir sets the new standard for innovation and sensible luxury.

Multi-faceted. Tactile. Brilliant.
Tapping into your sixth sense...
Heir.



Tapping Into Stainless Steel

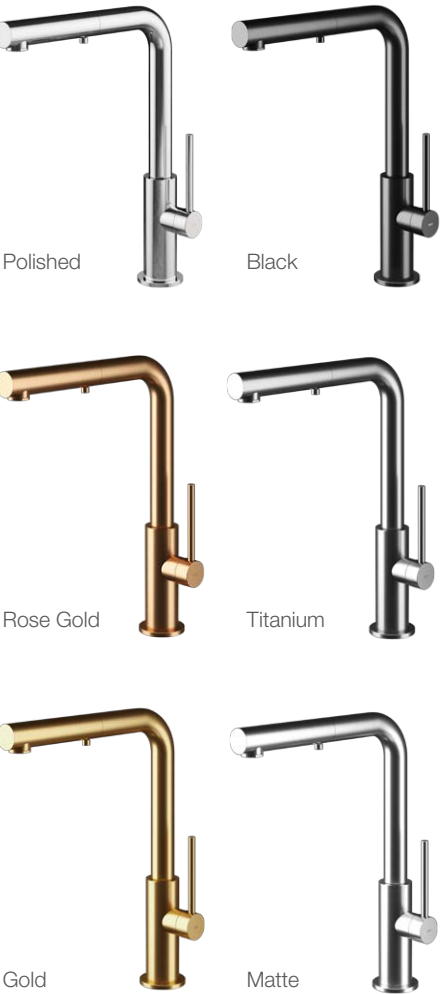
Italian design has always been synonymous with style and luxury, with a flair for making the functional beautiful. Kitchens are no different. Sleek, mono-containing stainless steel fittings also contribute to the tradition of combining utility with elegance and glamour.

As a boutique manufacturer, MGS is driven by innovation and a perfectionist commitment to the highest standards, maintained through numerous quality control procedures across the manufacturing process. Swiss engineering and Italian design form a perfect balance that makes MGS faucets exceptional and unique.

Crafted of solid, marine-grade AISI 316 L stainless steel, each MGS faucet is cared for like a gemstone with special attention to detail. All components are polished by master craftsmen prior to assembly, resulting in a flawless, scratch-resistant surface that is smooth and pore-free, resistant to bacteria, and very easy to maintain. Manufactured using finely calibrated precision machining and finished by hand, MGS faucets offer the perfect balance of beautiful form and superior function.

The MGS Cucina curated collections include VELA, SPIN and NEMO, with complimentary kitchen accessories are stocked by Forte Brands in four stunning finishes: Stainless Steel Polished, Stainless Steel Matte, Stainless Steel Matte Black PVD, and Stainless Steel Matte Gold PVD. (Stainless Steel Matte Titanium PVD and Stainless Steel Matte Rose Gold PVD is also available by special order.)

SPIN HD SERIES



ARCHITECT MORAN GOZALI, LS HOUSE
PHOTO ODED SMADAR



Canadian Modern Bathware by Blu Bathworks

Established in 2006 by designer Michael Gottschalk, Blu Bathworks® is a Canadian modern bathware design-house + manufacturer, based in beautiful British Columbia.

Blu offers the complete modern bathware solution with a wide range of luxury bath and furniture collections, fully certified for the North American market.

Collaborating with established designers and premium factories in Europe, Gottschalk has quickly reached a high level in both aesthetics and design structure. Thanks to which, the company offers a rich and unique product offering, based on design principles marrying aesthetics and the latest technology.

Headquartered in Burnaby, Blu continues to work with the Architect and Design community to develop the product offering, as well as work on custom designs for high-end residential and commercial projects.

European know-how and an investment in technology have been key to Blu's evolution and ever-growing place in the market. Blu products are widely available, with a select network of premier dealers across North America.

BLU BATHWORKS VANITY F45V1-0700-01M + FV1D-0700-04M,
BLU STONE COUNTERTOP SINK SA0107N37-01M



blu
BATHWORKS®

BLU BATHWORKS FREESTANDING BATHTUB BT0305.02-01M

The Blu Inox Collection

The simplest and most minimal shapes give the range unique values, such as adaptability, resistance, durability, and elegance. Designed and crafted in Italy, INOX is the primary line within our tapware range, always in stainless steel, in order to guarantee the highest standards.

The ranges set standards for product design that is sustainable in the most optimal way. The durability of the high-quality materials used the innovative functional concepts and the archetypal understated design guarantee usability for many decades.

The use of a noble raw material such as stainless steel AISI316L and AISI304, the flow regulators, aerators and neutral cardboard packages are some of the various product components that guarantee the respect of the environment in which we all live in. Recyclable materials are preferred as more durable and environment-friendly, and all are subject to stringent quality controls.

Sustainable products must be purposive. The timeless archetypal design of Hans Thyge Raunkjaer, Studio Adolini and Luca Papini includes their useful, intuitively, operable functions and the quality of enduring materials.

All the INOX collection is in the name of maximum flexibility for a free combination of elements adaptable to any context and need. A dynamic built-in system that allows the user to combine it with different design elements, thus determining the various aesthetic solutions according to any bathroom setting.

BLU BATHWORKS INOX DECK HANDSHOWER QHS-0037-AS, VALVE.02 SERIES HANDLES QTH-2051V-AS + QTH2051-AS, TUBFILLER QDS-0301-AS



BLU BATHWORKS INOX DECK SPOUT QDS-0600-OR, VALVE.02 SERIES HANDLES QTH-2051V-OR

The complete destination for luxury bath and kitchen

Waterworks has reimaged its coveted kitchen and bar faucets. Elegant and powerful without compromise, they transform rooms in beautiful and unexpected ways.

Discover the latest Waterworks innovations, including new integrated pull-spray faucets in sizes from small-scale to show-stopping; new Bond faucets, designed to project a level of soulfulness and artistry rarely seen in modern kitchen fittings; and new mixed metal finishes, which imbue a kitchen with personality and style while letting you visually connect different elements in the room.

With a vast array of styles, the company makes it easy to find the perfect kitchen and bar fittings, pot fillers and water dispensers for any project. Explore a range of timeless options—each crafted and engineered with exceptional quality born from over 40 years of experience.



ESTB. 1978

WATERWORKS



The Original Kitchen Workstation



The Galley® represents a whole new category of kitchen appliance, a complete culinary system where one can prepare, cook, serve, entertain, and clean all in one central and convenient place. The kitchen is even more functional and ergonomic with a cooktop next to the Workstation. This new kitchen work line concept is much more efficient than the traditional work triangle. Each Galley is thoughtfully designed, engineered, and hand-crafted in the USA.

In your Galley, you can chop, strain, and mix easily and ergonomically to prepare a meal and efficiently transition to cooking with a cooktop nearby. Using various Serving Boards, quickly and conveniently transform your prepare and cook station into a serving station or set out drinks and hors d'oeuvres to create an ideal entertaining station. Contain the mess within your Galley and clean throughout preparing, cooking, serving, and entertaining!

THE GALLEY
REINVENT YOUR KITCHEN



70+ Years of Design Excellence

As a global leader in kitchen and bath, Fantini excels at melding technological innovations with timeless forms. For example, Fantini's Icona Collection, designed in partnership with Vincent Van Duysen, takes its shape from ergonomic principles. Offered in two varieties, Icona Classic includes traditional cross-shaped handles, and Icona Deco, which presents more modern rounded-bottom lever handles, are amenable to any aesthetic.

Many of Fantini's collections are shaped around PVD finishes. This technology and application method ensure each product is made with care. Fantini strives for the best faucets and fixtures, with finishes that will last the test of time. Today, Fantini uses PVD for an enhanced finish across a selection of its faucets and fixtures, giving options including Matte Copper, Matte British Gold, Raw Metal, Pure Brass, Matte Gun Metal and Polished Nickel.



ICONA DECO SHOWER SET, THERMOSTATIC MIXER WITH 2-WAY DIVERTER, POLISHED NICKEL PVD



ICONA DECO, WALL-MOUNT FAUCET, NICKEL PVD



ICONA CLASSIC, THREE-HOLE FAUCET, PURE BRASS PVD



ICONA CLASSIC COLLECTION, VARIOUS PVD FINISHES: MATTE COPPER, MATTE BRITISH GOLD, RAW METAL, PURE BRASS, MATTE GUN METAL & NICKEL

PVD (Physical Vapor Deposition) being one of the finish types offered, is one of the most durable finishes in the industry. The chemical process was founded in the aerospace industry, originally used for metal tools in the 70's and has spread throughout many industries since its discovery. Due to the chemical's hardness, resistance, and durability PVD finishes are hypoallergenic and resistant to corrosion, chemical products, and UV light. When compared to other chemical processes, PVD has a reduced environmental impact.

FANTINI
RUBINETTI

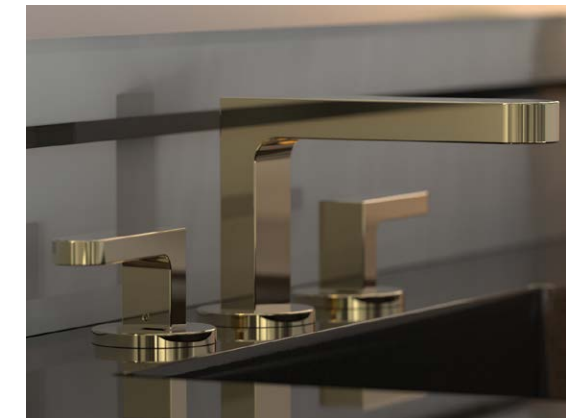
Phylrich Truly Made In the USA

For 60 years the Phylrich brand has set the standard creating luxurious bathrooms in elegant homes and fine hotels throughout the world. With this rich history Phylrich is determined to be an influential leader and trendsetter in decorative plumbing well into the future.

We are proud to say that Phylrich is Made in the USA at our design center, factory and company headquarters in Southern California. Having design, engineering, manufacturing and finishing in-house have enabled us to create jobs, reduce costs and control quality far better than our competitors. All Phylrich signature collections are crafted from premium grade certified materials, with a high style design reflecting simplicity and elegance.

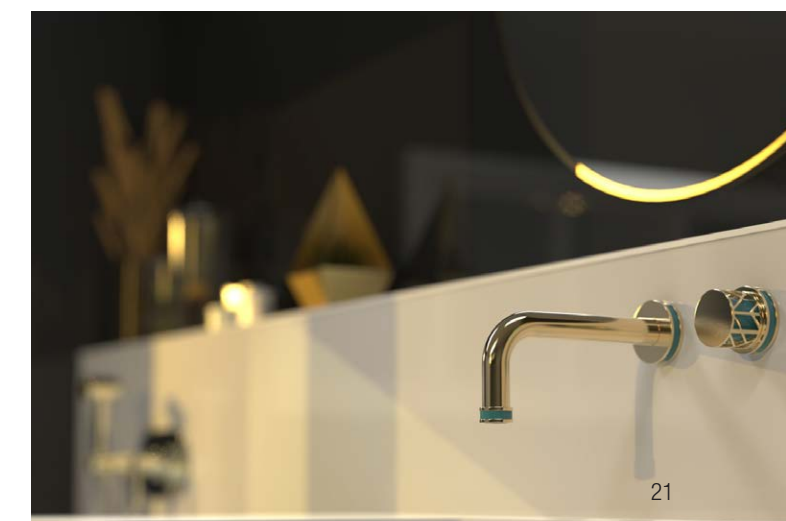
American Made Craftsmanship and it flows through everything we do.

It's an exciting time for the Phylrich brand as our journey continues. Look for several new luxurious collections and products launching in 2021.



PHYLIRICH®

Defining Luxury Since 1959



WATERMARK
BROOKLYN, NEW YORK

Watermark

The award-winning Elan Vital collection presents the ultimate in stripped down aesthetic. Using parts reminiscent of commercial ball valves and plumbing unions, the range offers a unique visual combined with the advantages of modern valves and aeration. Available in 24 stunning finishes, it's easy to see why the Elan Vital is a best seller.





Timeless, Durable, Sustainable By Vola

Unchanged from its original design in 1968 by the legendary Arne Jacobsen, the faucet continues to define design then and now. VOLA's singular aesthetic is the epitome of Scandinavian design and intention; no excess ornamentation combined with the highest quality craftsmanship and materials. Ostensibly still the most imitated fixture design on the market today, Jacobsen's archetypal brainchild is not just a faucet but a piece of design history.

VOLA has taken a sustainable approach from the very beginning. Since 1968, they've created timeless designs while carefully managing precious resources. They have always made products that are built to last, while ensuring the internal parts of even their oldest products can be repaired and replaced.

They remain resolute in their mission to defend and develop their position as an exclusive design brand, representing the best of Scandinavian design. They will always produce VOLA taps and mixers in Denmark and they will always use the highest quality raw materials. They take care to preserve resources such as energy and water. While respecting their design heritage, they continue to invest in new product development to reinforce their leadership status. Even revolutionary design can benefit from technology led evolution.

Hastings Tile & Bath has been the exclusive U.S. importer and distributor of the iconic Danish faucet line VOLA for over 20 years and they are proud to now distribute the brand in Canada as well.



State-of-the-Art Steam Touch&Steam



A sheet of glass with a clean and fascinating design: state-of-the-art steam generating technology is housed behind this simple object.

Touch screen controls magically light the glass and let you choose a variety of functions for steam, color-therapy, and warm air circulation.

Installable in any shower and with no outside mechanical space required, Touch&Steam is a fully integrated system that offers a unique mix of stylish design and performance for a whole new way of enjoying your own Hammam

effe
PERFECT WELLNESS
BY EFFEGIBI



Yoku SH brings together a sauna, hammam, and shower in a spa that lets you relive these ancient practices.

The key features of the Yoku SH system are the large recessed glass wall in bronze smoked glass along the front and the vertical elements in natural wood which create the feeling of being outdoors, in the middle of a forest, bringing elegance and privacy to the heat experience.

Design: Marco Williams Fagioli





The Original Glass Sink Vitraform

Glass is an amazingly beautiful and elegant medium, yet the very qualities that make it so appealing can make it fragile and delicate. Vitraform's innovative and proprietary manufacturing process results in stunning glass sinks and countertops that are as resilient as they are aesthetically pleasing.

A seemingly limitless combination of styles, glass colors and finishes offer options for every variety of bath and powder room design.

Vitraform's best-selling style, the countersink, is a sleek and modern integral sink design using a single, seamless piece of glass to form the counter and sink basin. The countersink can be directly wall mounted to create a "free-floating" look, supported by legs, or installed on top of your favorite vanity.

V I T R A F O R M

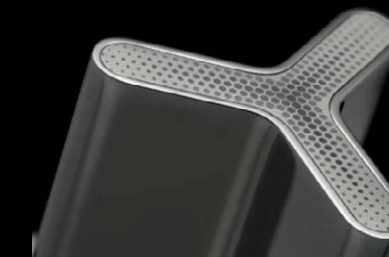
ICON-X



ICON-X by THG PARIS was designed in collaboration with legendary STUDIO F.A. PORSCHE. "Design must be honest" – these four words spoken by the founder, Ferdinand Alexander Porsche, get to the heart of our thinking. They mean that design is not simply decoration or superficial beautification, but rather the perfect symbiosis of form and function.



A mixture of metal finishes can create a unique appearance, utilizing both texture and color. ICON-X provides a platform for creating customized fittings within a clean, modern design.



Generally used in aircraft and space industries, titanium has exceptional thermal, mechanical, as well as anti-corrosion properties in addition to its unique aesthetic beauty.

Carbon Gold has a spectacular appearance that changes with the light. Used on yachts racing in the Vendee Globe and Formula 1 race cars. It is manufactured under high pressure to reveal an utterly unique organic pattern formed by natural carbon fibers.





Nearly Two Centuries of Honing Engineering Skills

Samuel Heath presents the One Hundred Collection: epitomising the understated elegance associated with products that turn simple tasks into luxurious experiences.

This collection of taps, showers and accessories are designed with understated style and sense of refinement that is synonymous with contemporary British design, named after the address where their brass foundry has been located since the mid-nineteenth century: 100 Leopold Street, Birmingham, England.

Luxe and Wing lever options exhibit tasteful purity of form, while up to 11 interchangeable roundel finish combinations including City Bronze, Brushed Gold Matt & Stainless Steel allow for expression of individual style. Highly crafted details including meticulously knurled escutcheon detail and Clear or Gloss Black crystal insert options look beyond focal functionality to spark curiosity and delight the senses.

SAMUEL HEATH



The Art of Re-designing the Bath

By SOPHSTONE



At the SOPHSTONE design workshop, inspiration is gained from the beautiful tranquil lines of nature. Departing from the more traditional shapes, innovation and outside the box thinking is encouraged to create bold... new... revolutionary designs.

As a boutique, family owned manufacturer, SOPHSTONE has the flexibility to incorporate age old techniques and old-world craftsmanship that are lost in the more cost-effective products on the market today. Every SOPHSTONE product is made by human hands; Skilled tradespeople and artisans creating a truly exquisite product line. A SOPHSTONE design will always give off an undeniable air of refinement... luxury... and craftsmanship.



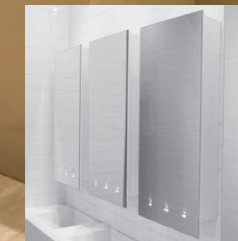
SOPHSTONE

Timeless Commitment

to green building and water
efficient eco-friendly products

A pioneer in the design of touchless water conservation products with cutting-edge infrared technology, Stern has been producing electronic sanitary products since 1989. Stern remains at the very forefront of world design and technology with a product range that consists of electronic touch free faucets, automatic soap dispensers, hand sanitizer stands, flush valves for urinals and toilets, including all the related accessories. Stern manufactures and machines all of its products and components in-house, combining style and innovation with an extensive product line that is available in a variety of finishes for both commercial and residential installations. Stern is committed to green building and to providing smart water solutions that maximize hygiene and water efficiency while helping to prevent cross contamination

stern
STERN ENGINEERING LTD.



All About Csaba

Csaba was created with state-of-the-art electronics in solid brass for unsurpassed performance and durability with a modern design that enhances any commercial restroom. Due to the immense success of this design we have created the Csaba range in a wide variety of options. Our sleek line of Csaba faucets and soap dispensers can also now be provided together, as a cost-effective, matching pair. You can choose from the standard size Csaba duo for custom commercial lavatory solutions for hospital and healthcare facility fixtures or the Petite Duo, for commercial washrooms with less space, such as gas stations and on trains and other forms of public transport. Csaba gives you the ability to choose between various water-saving options in the faucet, while the matching Csaba soap dispenser enables maximum savings by allowing control of the soap dosage. In addition, the Csaba soap dispenser with soap level indicator is the ideal way to reduce maintenance costs in high traffic areas with no need for maintenance staff to open the cabinet to check soap level. The soap level indicator, which is in the body of the faucet, shows green when soap tank is full, orange when soap level is low and red when a refill is needed.



CSABA DUO
FAUCET & SOAP DISPENSER



CSABA SOAP DISPENSER
WITH SOAP LEVEL INDICATOR



CSABA PETITE DUO
FAUCET & SOAP DISPENSER



Touchless Washroom Environment

Sterns Touch Free Wall Mounted Faucets and Automatic Soap Dispensers from the Extreme CS Series are activated by an IR sensor and will automatically activate when users place their hands in the sensor range and will stop once the users remove their hands.

No longer just nice-to-have, touchless restroom fixtures are an essential part of hygiene in commercial environments. Automated soap and sanitizer dispensers, as well as touch-free fixtures such as automatic flushers and faucets, reduce the touch points in one of the most germ-filled parts of a restroom.



stern
STERN ENGINEERING LTD.



EXCLUSIVE AT CANTU

A photograph showing a variety of mirrors from the Frost Mirror Collection arranged on a light-colored wall. The mirrors come in different shapes: rectangular, oval, and circular, and in different sizes. Some are simple, while others have thin frames. They reflect parts of the room, including a radiator and a doorway.

Pure Danish Design Frost Mirror Collection

Our vision and focus is to provide a broad platform of architectural elements that both inspire and provide comprehensive design and application solutions. Our Danish culture of progressive contemporary design is conveyed through our products in a manner that blends design with function, creativity with solutions.

The Mirror Collection – FROST has designed a unique range of mirrors with fine details and a simplistic look. The collection matches the FROST finishes and will complement products from across FROST's entire range. The mirrors are available in a variety of sizes and you can even create a 'mirror wall' using multiple mirrors to suit your own style and needs. The mirrors can be used in the hallway, bathroom, living room, in fact, any environment that you wish.

FROST
DENMARK

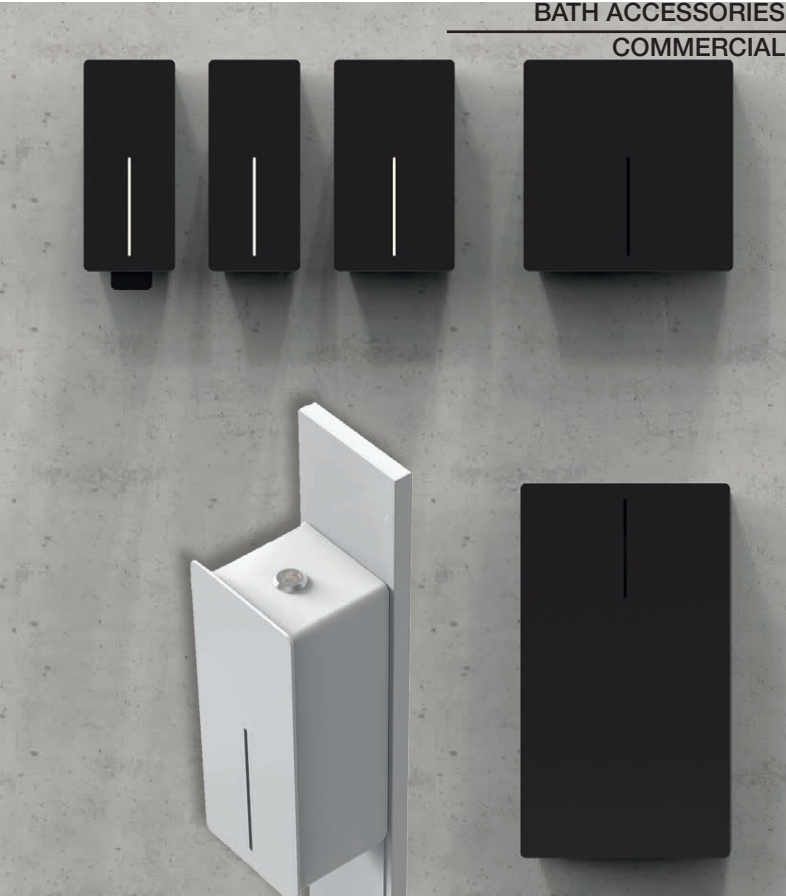
This is Us

DAN DRYER has positioned itself internationally as one of the most innovative suppliers of washroom equipment in the world.

Famous not only for hand dryers, but also for complete, ground-breaking hygiene solutions. The viking logo is easily recognisable in public and commercial washrooms all over the world.

Embodying classic Danish design traditions, our products are setting breakthrough design trends in the business.

Get a closer look into the world of DAN DRYER. Explore our solutions, find inspiration in our cases, dive into our history, or check out the latest design awards our solutions have won.



Designed by Us, Personalized by You

Your style, your space, your needs. At Americh, we believe that you know what's best for you. Americh provides you with a comprehensive palette of designs, features, accessories, sizes, and bathing systems from which to choose supported by outstanding customer service and exacting environmental standards. Our bathtubs range in style from classic and contemporary to individual and shared to cozy and chic. Our customized approach produces bathtubs that fit seamlessly into any bathroom, any life, any style.

AMERICH®

AMERICH ALSO OFFERS TWO DISTINCT COLLECTIONS OF ACRYLIC SHOWER BASES WITH OVER 100 DIFFERENT SIZES TO CHOOSE FROM.



ORLEANS



VALERIE

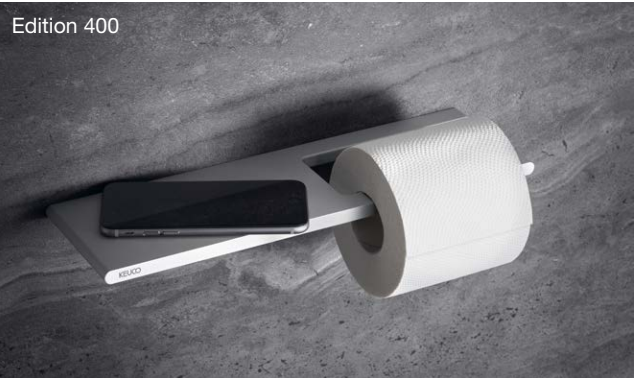
Sensuousness and Sensibility

Passion for bathroom design runs through our veins and shows in our products. A bathroom brought to life with KEUCO awakens emotions and is an intimate place of well-being. It conveys elegance and luxury, while combining aesthetics, ergonomics and functionality.

Since 1953, our family-owned and managed company, has undergone a rapid and sustained transformation. From market leader for high quality bathroom accessories, KEUCO has evolved into a brand known for holistic wash place solutions, offering a wide array of bathroom accessories, LED light mirrors and mirror cabinets, and bathroom furniture.

Important factors contributing to our success are the contemporary, technologically innovative products, the highest quality standards, a clear design statement, an impeccable quality control system and our state-of-the-art manufacturing facilities. As a result of intense product development work, use of premium materials, careful craftsmanship and innovative marketing and branding initiatives, KEUCO products are now sold successfully and featured in some of the most prestigious projects around the world.

KEUCO



Stone Forest

Stone Forest brings the essential energy and beauty of nature into the bathroom with sculpted sinks and bathtubs designed to evoke the expansive and restorative feelings of the outdoor world.

Whether carved from single blocks of granite, marble, travertine or onyx; forged in bronze or copper; or crafted from wood and iron, each piece is uniquely authentic.

Elemental Collection, a unique, modular concept that allows you to combine integral stone sinks, wood drawers and steel or wood shelving in unlimited combinations. Brass legs with knurled fittings support the components and are available in either aged brass or polished nickel or Matte Black



ELEMENTAL Ventus Bath Sink in Antique Gray Limestone with Elemental Wall Unit in Aged Brass



ELEMENTAL Terra Sink with drawer Vanity and storage set. Carrara Marble and Cement Grey wood



ELEMENTAL Trough Sink in Carrara Marble with Matte Black Trough Tray Vanity



ELEMENTAL Terra Bath Sink in Carrara Marble with Elemental Console Vanity in Aged Brass



Renaissance Console Top carved from a single block of Carrara Marble with Aged Brass legs



Wave Pedestal, Zero Pedestal, Veneto Pedestal sinks, all expertly carved in black granite or basalt with a honed finish



Dornbracht presents CYO a new bathroom fitting series

Authentic, genuine, tangible – The new CYO bathroom fitting series combines the design history of Dornbracht with today's zeitgeist. The sculptural C-shaped spout, designed by Sieger Design, has been reinterpreted in response to today's need for authenticity and timeless elegance. Dornbracht manufactures its products in Germany using the highest quality standards with respect to materials and workmanship.

Inspired by a design from the company's 1969 design archive, CYO represents the spirit of this era. Featuring a design that seems familiar and at the same time novel and forward-looking, CYO combines the cultural

and creative foundation of the Dornbracht brand with the new brand promise: "Leading Designs for Architecture".

The central design element of CYO is the newly interpreted, archetypal C spout. The spout defines the extravagant contour and the sculptural quality of CYO. The basic shape of the circle is continued consistently throughout the series: from the handle elements to the water jet, which follows the shape of the spout. The product range, which consists of faucets for the sink, bathtub, and shower is complemented by matching accessories, resulting in a harmonious overall picture across all areas of application in the bathroom.

CYO meets the desire for more individuality

One highlight of the series is the unique handle which emphasizes new functional aspects because it is operated using a rotatable outer ring. A finely tuned raster gives users a conscious, tactile response each time they turn the handle. A wide and inspiring selection of handle inserts in various finishes, designs, and materials, such as structures or natural stone, provides a great deal of design options and personalization. The handle inserts can be individually combined and easily replaced. Further, Dornbracht's x-tra Service division which provides completely bespoke solutions, can offer additional possibilities for CYO customization.

**DORN
BRACHT**

Finishes selected especially for CYO include the bi-structural finishes that combine glossy and matte surfaces.

They emphasize the lines and – as a particularly subtle form of contrast – lend the design additional sophistication.

Six exclusive finishes also provide further possibilities for individualization.

The extraordinary depth of color and high brilliance of the finishes are the results of a precise and elaborate finishing process.

Dornbracht design DNA

Balanced proportions and uncompromising precision make up the progressive and unmistakable character that gives CYO a strong personality. The design thus complies with the defined Dornbracht design principles which are the basis of every design and constitute the lasting quality of the products.





Taming the Beauty of Water

Aquabrax, an innovator and pioneer in the plumbing industry since 1986, offers a beautiful selection of bathroom and kitchen faucets. For most of their collections, the possibility of customizing your favourite faucet with their signature finishes such as Montreal Black and British Gold, can be done and handcrafted in the state-of-the-art plating facility located in Quebec, Canada. Aquabrax collections allow you to create endless possibilities, as they can effortlessly be incorporated into any water space, no matter the vision in mind.

The MB2 collection stands boldly in any environment by virtue of its minimalistic round-shaped design, offering a choice of two pairs of handle inserts: knurled and smooth. For its entire range of applications, this stunning collection is available in two standard finishes, polished chrome and brushed gold, as well as stylish custom colors.

AQUABRASS

MB2 COLLECTION

Fine Ceramic Sinks & Toilets

Simas manufactures cutting-edge bathroom products made of ceramic, designed and produced entirely in Italy. The product offering consists of beautifully crafted wash basins, toilets, bidets, consoles and more. Each product category is available in a variety of colors, including white, black, navy, plum, lavender blue, and anthracite.

Additionally, Simas toilets feature a rimless system that offers superior high-performance flushing. This system makes cleaning simpler because there are no residues left behind. In addition, it reduces splashing and contributes to superior hygiene.



BADEN BADEN TOILET AND BIDET AND
AGILE COUNTERTOP WASH BASIN

simas®

SensoWash® Starck f

Maximum comfort, an uncompromisingly puristic look – the new generation SensoWash® Starck f shower-toilets excel with latest, comfort-enhancing technology, and fulfill the highest standards in sustainable design. Intuitive to configure and operate by remote control or via the SensoWash® app.



DURA VIT





INDUSTRIA Collection

Proudly Italian

IB offers beautifully crafted collections of audacious bathroom and shower fixtures that will undeniably make a statement in any water space decor. Proudly made in Italy since 1985 and embraced by its culture and history, every single piece is designed, processed and assembled in their factory. Their product offering is the outcome of advanced technological innovation, with a special attention to detail and technical quality, from the design to the end results.



WE ARE IB



TAAAC Collection



K3 Collection



SUPERBOX Collection

Transforming the bathroom into a living environment

Over 125 years, the LAUFEN brand has been creating innovative sanitary products in their state-of-the-art facilities, with legendary Swiss precision, to transform bathrooms across the world into places for relaxation, rejuvenation and reflection. Complete collections, composed of washbasins, toilets, faucets, cabinets, bathtubs and accessories, give design freedom to create bathroom spaces which don't simply function but also – and above all – provide a stylish sanctuary.



The New Classic:
A collection of perfectly shaped innovations for the bathroom, designed for LAUFEN by Marcel Wanders Studio. The New Classic radiates the practicality of the harmonious form and combines it with contemporary style, in which bohemian taste blends perfectly with a cosmopolitan and metropolitan image, suggesting an eclectic lifestyle.



Sonar: The refined and graceful bathroom collection designed for LAUFEN by Patricia Urquiola. Expressive and yet minimalist, the slender lines are enhanced with a fine, three dimensional texture for the external surfaces of the washbasin bowls. The Sonar collection includes an extensive collection of washbasins, bathtubs and WCs together with a sophisticated furniture collection.



Kartell by LAUFEN: Offering a complete collection for the bathroom, marked by its innovative use of color and formed from the collaboration between two design companies: Kartell and LAUFEN. Perfectly in tune with today's stylistic trends, the collection of ceramic fixtures, bathtubs, faucets and a wide variety of accessories offer solutions that blend functional quality with a sensual, emotional dimension.

LAUFEN



Our Collaboration

As we are learning to spend more time in a single location, in the cocoon of familiar environments, our focus increasingly turns to those surroundings, the spaces in which we live and work, relax and contemplate.

Victoria + Albert has collaborated with Wallpaper* to develop three new color palettes that add joy and calm to inner sanctums. Compiled by Wallpaper* editor-in-chief Sarah Douglas, the three new palettes have been chosen to represent three different moods.



victoria + albert®

In collaboration with
Wallpaper*

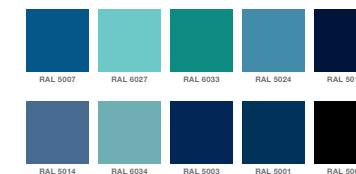
A DISTINCTIVE MEMBER OF THE  HOUSE OF ROHL



Dune Retreat



Wavelengths



Light Industrielle





Air-jet Innovation

For over 40 years, BainUltra®, a Canadian company, has helped customers throughout North America improve their personal health. While they've pioneered the development of therapeutic air jet baths, their mission over the years has evolved. Today, they offer an integrated line of products that help consumers improve relaxation, health and well-being right in their own homes. The company's mission is to transform the bathroom from the ordinary to the inspired, by making it a fully personalized space that uses the best designs and therapies that will cater to the needs of your body, mind and spirit. BainUltra uses the latest advances in hydrotherapy – incorporating heat, massage, light, sound and aroma – to reinvent the bathing experience.

As the the first manufacturer to develop air-jet technology, BainUltra® is known as the industry leader for the Hydro-thermo Massage® system, which combines Thermotherapy®, massage therapy and hydrotherapy. At BainUltra more than 70% of the manufacturing process is carried out by hand with great care by a team of expert craftspeople, whose talent and technique shine through in the unique beauty of each and every one of our products. The superior quality is the result of their uncompromising attention to detail and their creativity at every stage of the process – from our manufacturing facilities to your home.



Comfort

An invitation to dream...the Mood bathtub is based on a pair of offset ellipses resulting in a design that says fluidity and comfort. Its silhouette creates an air of relaxation in the bathroom.

In addition to its aesthetic qualities, Mood provides maximum comfort thanks to its reclining dual backs: a sitting position that is particularly conducive to reading, and a reclined option for pure relaxation. The elegant simplicity of the Mood line blends seamlessly with both contemporary and traditional interiors, with its play of shapes creating a perfect balance between a well-anchored base and more refined curves. A thicker rim on one side acts as a storage shelf for body care products.

Mood is handcrafted in WETMAR BiO™, a robust, non-slip, thermo-insulating eco-material. Available in True High Gloss™ or matte finish.



New Belshire Collection With DXV

This beautiful, full bathroom suite captures the opulence, glamour and sparkle of the nostalgic 1920s Golden Era. Thoughtfully crafted and beautifully detailed faucets complement the richness of warm woods and the timelessness of Carrara marble, materials that are handcrafted in Europe with the same meticulous care that defined the period. The exquisite soaking tub, faceted sinks and toilets are integral to the collection and equally stunning by design.

DXV



Locarno Bath Collection

Whether adding delicate touches or full glamour to the bathroom, Locarno is the perfect choice for creating an atmosphere of luxury and comfort. The Locarno collection offers a complete assortment of lavatory faucets, matching accessories and shower products.

Turning the handle of the Locarno bathroom faucets will open the way to a new experience with RibbonFlow, the latest spray technology from hansgrohe that releases a soft blanket of water to the hands, for efficient and enjoyable hand washing.



hansgrohe



Axor MyEdition

Setting oneself apart from the masses: Gratifying the need for uniqueness. AXOR MyEdition strikes out in a new direction.

Exclusive materials: for the plate produce one of a kind results: metal, wood, marble, leather.

A new concept for faucets. Exclusive finishes give faucets an exceptional charisma.

Exclusive in water design: the innovative PowderRain spray type. The sensual caress of water on your hands. Available for the first time ever for bathroom faucet.

Smart Design. Exemplary Craftsmanship.

Newport Brass is the recognized brand for quality constructed bathroom and kitchen products. Carrying the distinction of flawless beauty and extended durability, our products are available in a full range of finishes and contemporary, transitional and traditional styles.



NEWPORT BRASS®



BATH
KITCHEN

SmartControl... Everything

Precise control at your fingertips. How can we make everyday kitchen tasks effortless in a fresh, new way? This intriguing question resulted in the creation of the GROHE SmartControl faucet. Distinctly different in design and function, with no lever to regulate or handles to fine-tune, it's sleeker and more streamlined than most. Equipped with the exclusive GROHE SmartControl button at the tip of the spout, it enables easy push-button on/off and hands-free convenience, essential features in today's busy kitchen.



BATH
KITCHEN

Your perfect shower experience, right at your fingertips. What GROHE SmartControl does with water has to be felt to be believed. It elevates the simple shower to a whole new shower experience that seems to have been made for you alone. Enjoy a personalized and luxurious shower experience every day. The innovative GROHE SmartControl technology lets you choose the outlet, the water flow and temperature as desired. Operation is simple and easy for the whole family – simply push to start and stop, then turn to adjust the water flow.

Pure Freude
an Wasser



Jewelry For Your Walls

Geberit Flush Plates in 'Precious Metal' Finishes

When you're designing a dream bathroom, it's the subtle details that make the difference. You've already chosen wall-hung bathroom fixtures that seem to 'float' above the floor. Why stop there? Your dream fixtures deserve accents to match. Now Geberit brings you those accents. Our flush plates for wall-hung fixtures are newly available in the hottest 'precious metal' finishes. The plates themselves offer glass, concrete-look solid surface materials, natural slate, or wood tones that merge with surrounding elements. Choose the surface, choose the metal accent, and suddenly you've given your dream bathroom the perfect finishing touch.



Red Gold

With its intense, coppery tone, red gold exudes a sense of warmth and elegance in the bathroom, especially when combined with luxury surfaces in light or dark shades.



Brass

The classic golden tone of brass is experiencing a modern renaissance and adds a touch of glamour to any bathroom.



Black Chrome

The subtle mystery of black chrome is the perfect complement in a bathroom with shadowy, muted tones. Or pair it with lighter colors for a sharp contrast that makes an unforgettable statement.



Bright Chrome

This timeless metal finish reveals a completely new side when glossy and matte brushed elements are paired with on-trend flush plate surfaces.



KARTNERS
BATHROOM ACCESSORIES +

Elevate Your Everyday with Kartners

The KARTNERS Oslo Collection is a European Contemporary design that offers a minimalist look, softened by rounded organic forms. A modern, yet timeless, collection, Oslo delivers strong style that complements a wide range of aesthetics.



BATH
BATH ACCESSORIES



The Power of Steam From Steamist

Steamist enables homeowners to create a luxury spa environment in the master bath. Steam bathing has incredible power to relax, restore and renew, with healthy heat and moisture that helps users look and feel great.

All Steamist Digital Controls feature patented dual-sensor technology to ensure the ultimate in user comfort. In addition, separate control profiles can be programmed for two sets of user preferences for temperature, spa options and other functions.

To further enhance the experience, homeowners can select Total Sense™ Spa Options to add aromatherapy, chromatherapy, music and more to their luxury home spa.

STEAMIST®
RELAX. RESTORE. RENEW.



STEAMIST Touchscreen Digital Controls



STEAMIST Contemporary Steamheads



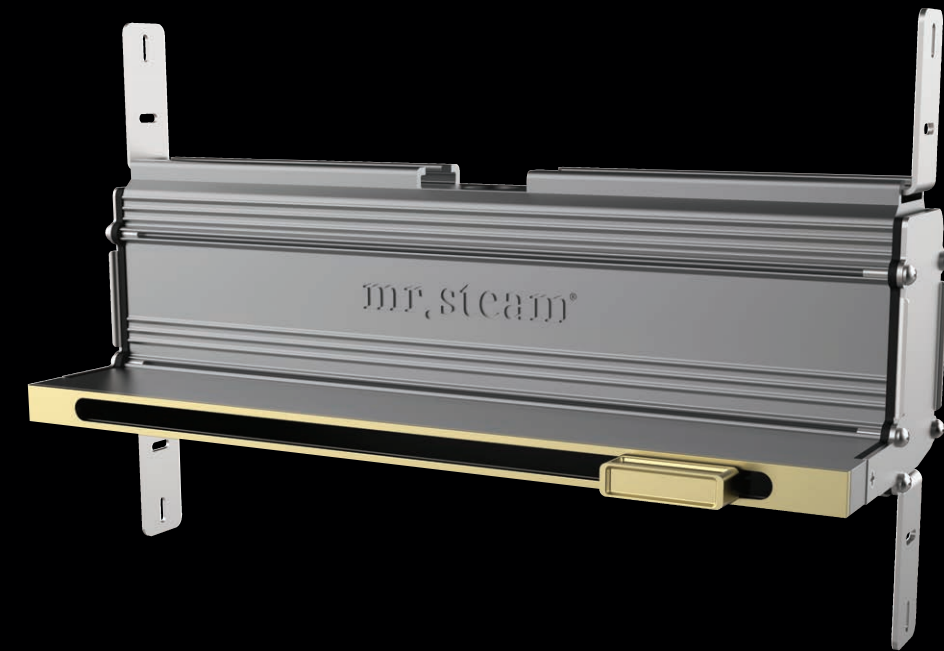


Transform Your Shower With MrSteam

For centuries, MrSteam has brought the powerful benefits of steam into daily routines of homeowners. By supporting heart, lung and vascular health, our time-tested steam showers are crafted to deliver comprehensive wellness into every home with ease. With its minimalistic form, the award-winning Linear SteamHead emits tranquil steam with a patented, whisper-quiet design. Add a symphony of scents with the new AromaTray that enables you to personalize your steam. Discover our full range of steam innovations that transform your bathroom into a retreat, all backed by our legacy of living well.

mr.steam®

Feel Good Inc.



The Linear SteamHead is available in these finishes:



Polished
Chrome



Polished
Nickel



Brushed
Nickel



Polished
Brass



Satin
Brass



Brushed
Bronze



Oil Rubbed
Bronze



Matte
Black

Barrier Free Bathrooms With Infinity Drain

For over a decade, Infinity Drain® has established itself as a leader in design-centric architectural drainage solutions. Innovations like its Site Sizable® linear drain, Next Day Custom fabrication program, and Schluter®-KERDI approved linear drains continue to revolutionize bathroom installation and shape barrier free bathroom design. From hand polishing decorative grates to custom fabricating to your exacting specifications, Infinity Drain offers the broadest selection of decorative choices and installation options. Infinity Drain products are ideal for bathrooms, outdoor or landscape drainage, and commercial applications. Proudly made in the USA.

ID Infinity Drain



Bold Aesthetic Boundless Comfort

Reinvigorate your
space with ICO.



CONFIDENT CONTOURS & STATEMENT SILHOUETTES ARE THE HALLMARKS OF OUR TUZIO AND KONTOUR TOWEL WARMER RANGES.



Defined by raw architectural integrity & expressive structures, Tuzio delivers on luxury bathroom craftsmanship. Our Kontour range is the ultimate, affordable choice that doesn't compromise on expression. At the heart of each piece is the simplicity of a product that functions as flawlessly as it looks. Kissed in 7 lustrous finishes, these pieces demand attention & promise to be the focal point.

ico.



Reflections of Beauty With Electric Mirror

We've elevated the ordinary to the extraordinary, combining form and function to create lighted mirrors that help you see your reflection in a whole new light.

Integrity™ with Ava™ Lighted Mirror

Outdoors, indoors or an evening out, Ava's on-screen touch-control makes it easy to change the color of white light to match a variety of settings, helping you bring out that beautiful, confident you.

Brilliance™ Lighted Mirror

Combining a timeless, balanced shape with both task lighting and wall-glow lighting is sheer Brilliance™. The dual dimmable lighting on this slim-profile mirror elevates lighted mirrors to a level never before seen.



Over 50 Years of Swiss Innovation and Design

SIDLER® International Ltd. Mirrored Medicine Cabinets embody Swiss quality design with the details and innovation of a high luxury product. The "Swiss" standard of craftsmanship and design is the approach in the manufacturing of our collection, making SIDLER one of the largest manufacturers of mirrored medicine cabinets in Switzerland.

With over 50 years of dedication and perseverance, SIDLER Mirrored Medicine Cabinets can be best described in Swiss German as Leidenschaft; which means passion.

Leidenschaft is abundant in each of the dedicated individuals of the SIDLER team who play a role in creating our high quality, innovative and luxurious mirrored medicine cabinets. SIDLER's continued dedication and passion is evident in the love of detail, practical and functional design, innovation and quality.

SIDLER Mirrored Medicine Cabinets' luxury design is light, airy, atmospheric and high quality, offering practical storage solutions, making



it a consumer market leader in Switzerland and North America. Our elegant, customized designs combine modern simplicity and authenticity to create a unique design aesthetic to fit and compliment any home or building development project.

Embrace the excitement of SIDLER Mirrored Medicine Cabinets as your preferred luxury design solution!



SIDLER® Tall Collection and
SIDLER® Quadro Collection



Modern American Artisan Tradition Since 1999

Waterstone Faucets has been paying homage to the modern American artisan tradition since 1999. Each Waterstone product is touched by hand and made with integrity from our headquarters in Southern California. Our best-in-class plumbing fixtures are testaments to craftsmanship as a unifying force. We forge lasting bonds with our customers through the products they see and touch every day.



Waterstone's Traditional Gantry faucet was modeled after the massive Gantry cranes in Los Angeles Harbor.

The latest introduction from Waterstone: the innovative Fulton Positive Lock Pulldown faucet.



SmartStation: Form, Function and Finesse

Just because it is beautiful, does not mean it is not ready to work. In fact, the SmartStation stainless steel sink with ledge is equipped for culinary battle from the get-go. With the ultimate accessory selection, sliding from side to side of the bowl on two levels, the SmartStation sets centralize all prepping and cleaning tasks leading to great culinary feasts.

The SmartStation collection reinvents itself by offering thoughtfully combined sink and accessory sets to assist you in various tasks. Looking to create a drink station, a workstation where all meals are prepared or a service station to entertain your guests, the SmartStation collection has an assortment for every lifestyle and every space.



Precious Metals Collection

Native Trails celebrates 25 years with a luxe anniversary series featuring genuine 24k Matte Gold, Platinum, and Silver glazed fireclay sinks. Combining age-old artisan culture with modern techniques and design, the Precious Metals Collection comes to life. Handcrafted of fine fireclay by the hands of expert Italian artisans, fired twice at over 2200°F, each sink is then hand glazed with precious metal and fired yet a third time. The result represents the finest aesthetic of luxury while paying homage to a storied past.

Native Trails has a passion for bringing sustainability and one-of-a-kind artisan creations to kitchens and baths throughout the world. Their artisan-made product lines include sinks made of hammered copper, NativeStone® concrete, and Italian spun-glass, along with highly unique collections of handcrafted bathroom vanities.



HOME
REFINEMENTS

JULIEN



INTRODUCING **COAL BLACK** SILGRANIT® Sinks

Discover amazing new design opportunities with BLANCO's latest Silgranit colour, Coal Black. This deep, intense shade is the perfect matte-black accent for contemporary kitchens.

Silgranit sinks are admired around the world for their exclusive styles and designer colour palette. The kitchen has become a central point in our homes and your sink is an integral part of your daily kitchen routine. Silgranit is a patented granite composite sink material that is beautiful, strong and easy to clean. The ultimate choice for long-lasting kitchen bliss.



BLANCO



Discover the Wonders of a Franke Kitchen

At Franke we believe that your kitchen should be as unique as you are – a place where you cook, eat, entertain and celebrate a style that’s all your own. You can create the perfect kitchen with Franke sinks, faucets and accessories that fit your needs all day, every day. Discover Franke Wonderful for yourself.

Wonderfully Clever

Imagine a kitchen where everything works together, looks great and has a purpose. A kitchen where all components are designed to help you get more enjoyment out of your day. At Franke, this is how we approach the design of our kitchen systems. We work hard to ensure that our solutions deliver the perfect balance of style, comfort and functionality to your kitchen.

Wonderfully Versatile

Are you a minimalist? Or someone who prefers bold colors and shapes? With Franke, it doesn’t have to be one or the other. Our wide range of textures, colors and materials allows you to customize your kitchen to complement your sense of style.

Wonderfully Innovative

For more than 100 years we’ve been tirelessly improving and innovating our products and services. This history and experience has helped us design and create kitchen solutions and products that prove themselves day-in and day-out in more than 100 million households around the globe.

Wonderfully Impressive

Franke products are designed to be just as beautiful as they are easy to use. And because we only use carefully selected materials and state-of-the-art production methods, you can be confident that your kitchen has been built to last.



Getting it Just Right

Since the roaring nineteen twenties Colonial Bronze has designed and fashioned fine architectural hardware in our facility in Torrington, Connecticut. We do not outsource any products or process. Our merchandise is 100% crafted by our talented craftspeople.

Every Colonial Bronze product that you create or specify is fashioned from raw bar stock and custom designed extrusions. All the machining, polishing, plating and assembly are performed by our talented craftspeople in our factory. Over the years our innovative platers have created striking finishes with more beautiful colors and textures on the horizon.

Colonial Bronze uses only raw brass material that is formed with no less than 94% recycled materials and every product we ship is 100% recyclable.

Another benefit for Colonial Bronze customers is our ability to customize the sizing of many of our cataloged designs to fit perfectly into your unique designed spaces.

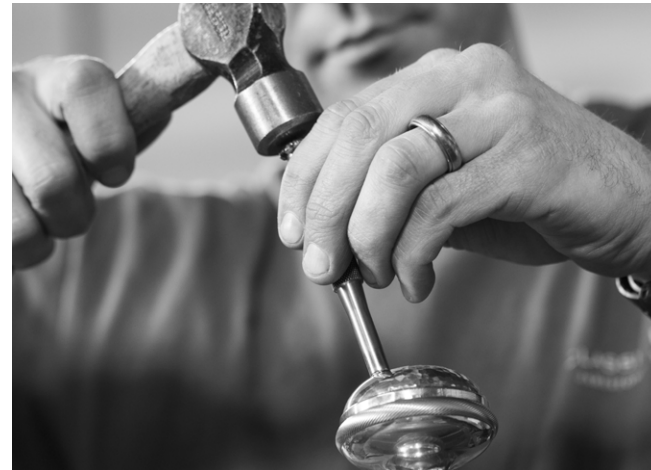
We also work with adventurous designers to create your own bespoke designs. Great designers and architects build their reputations on getting their spaces “just-right,” and “just-right” is what we are committed to at Colonial Bronze.





Classic Brass

Classic Brass is located in Western New York – home to generations of skilled American Craftsmen who take pride in every piece of hardware we produce in our Jamestown factory. Every piece of our quality hardware is finished by hand, requiring intricate steps and processes to create our 37 unique and stunning finishes. The detail, scale and range of flexibility is unmatched in the marketplace, and our team is honored to deliver exceptional customer service to our valued partners. It is our goal to enhance your cabinetry and doors by adding our hardware. We guarantee our solid brass hardware will provide a defining touch of elegance and beauty to any room or project



®
CLASSIC BRASS
JAMESTOWN, NEW YORK



Reguitti Obliq

Reguitti Obliq minimal handle for doors and windows offers aesthetics, functionality, ergonomics and sustainability, all in one product.

A minimal solution highlighting the elegance of shapes

Obliq is the minimal handle with essential design. The rosette is fully integrated in the handle by way of reduced components. The handle is able to fit right in with every door thanks to the elegance and minimalism of its shape. Attention to detail is absolute: every technical choice was made to reduce size as a function of pure aesthetic pleasure and grip comfort.

Aesthetics, functionality and ergonomics go hand-in-hand into one product, 100% Made in Italy and co-designed with architect Sergio Baronchelli. Thanks to the concealed rosette the handle is fitting with the style of every door.

REGUITTI
TYMAN group





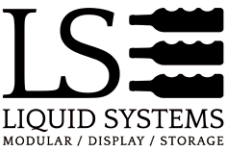
New Geometry By JWL

With two decades of interior design experience, JWL has created a unique line of handles for cabinetry, glass and wood doors. Crafted from solid stainless steel with a curved inner profile for comfort grip. The clean lined handle options can be configured into eye catching one-of-a-kind geometric combinations that look simply stunning. Innovative – taking something as refined as a handle and making it better.



Liquid Systems

Liquid Systems is as much stunning architectural hardware as it is an effective wine display and storage solution. Crafted in Canada with the highest quality, finish and design in mind we ensure your wine rack is as beautiful as the collection it holds. Made to order to fit your exact space and aesthetic requirements Liquid Systems is available in 13 anodized colours. Black, blue, gold? A ten-bottle wall mounted display or 500 bottle floor-to-ceiling mounted collection? You choose and let Liquid Systems make it a reality.



WOOD + METAL

Mixed materials and finishes continue to grow in popularity and can create a completely custom look without the custom effort. Our Manor collection cabinet hardware is right on trend, shown here in a mix of polished nickel and walnut. Our matching door hardware shown receives the same treatment and is available in entry, passage and privacy sets.

We are happy to offer completely custom designs as well as specialty wood species for our discerning clients. Including: Bolivian Rosewood, White European Oak, Ebony and Zebra wood, to name a few. With a choice of 32 standard finishes, Imagine the possibilities of what we can create together.

Our artisans hand finish each piece in our factory in Jamestown, New York. We pride ourselves on quality workmanship, raising the standard for solid brass cabinet and door hardware across the country.



Rocky Mountain Hardware

Handcrafted in the USA, Rocky Mountain Hardware manufactures the most complete line of solid bronze architectural door hardware and accessories.

Using only the finest art-grade bronze, every piece is precisely engineered and guaranteed to work like new for generations to come. Each piece is available in a choice of 12 hand-applied patina finishes.

With thousands of products in our mainline, from door hardware to cabinet knobs, robe hooks to window cranks, decorative tiles to hinges, Rocky Mountain Hardware complements a broad range of architectural styles and needs. All products are cast of a minimum of 90% recycled content, 50% of which is post-consumer.

ROCKY MOUNTAIN
H A R D W A R E





BALDWIN[®]
crafted FOR DISTINCTION

Sun Valley Bronze

Family owned and operated since 1992, our collection of bronze architectural hardware is made entirely in the United States. Corporate office operation, design and manufacturing all happen at the base of the beautiful mountains of central Idaho. We place an emphasis on lean manufacturing and our hardware is SCS certified for pre-consumer recycled content. We were recognized as a Pollution Prevention Champion by the Idaho Department of Environmental Quality in 2018 for our commitment to operating an environmentally friendly manufacturing facility.

At Sun Valley Bronze, we can tailor our current products to meet our client's needs as well as create unique pieces specific to any project. Many of the knobs, levers, entry sets, and other one-of-a-kind bronze pieces; are custom made at the special request of architects, designers and residential and commercial clients.



Make It Personal With Emtek SELECT Door Levers

Emtek believes that you should have the freedom to express your creativity with hardware. Whether you decide to match to other finishes in your room design, or mix styles to make your door the star of the show, Emtek's new SELECT levers allow you to choose the message you want to send.

Emtek SELECT Levers offer 6 handle designs and 3 stem options to pair with more than 20 rosette styles in 12+ finishes for hundreds of unique combinations, all assembled to order in Southern California.



L-SQUARE



T-BAR



R-BAR



FACETED



HAMMERED



KNURLED



TRIBECA



STRAIGHT KNURLED



WHITE MARBLE



EMTEK®



The Designer's Choice

Top Knobs partners with professional showrooms to display 30+ product collections and finishes of kitchen and bath decorative hardware and accessories. As a “design company” our products are not available at mass merchandising do-it-yourself stores. Top Knobs is available only from design showrooms.

Top Knobs offers the industry's most extensive line of premium quality cabinet, drawer, and bath knobs, pulls and other hardware, created to suit all tastes and styles. The company's wide selection of traditional and modern decorative hardware is the result of a creative design staff and talented craftsmen. Each Top Knobs piece has the quality look and feel of custom-made, at an affordable price. Top Knobs is the #1 leader and #1 trend-setter for the professional decorative hardware industry. Cantu displays a large selection of Top Knobs products so that you can experience the design, selection, quality, value, and service that has made us so successful.

Top Knobs was founded in 1994 and began its remarkable climb to leadership in the North American decorative hardware industry. Today Top Knobs is the #1 manufacturer of decorative hardware for the professional market. We have the greatest selection of products, and the top sales volume. Top Knobs products are prominently displayed in leading kitchen, bath and decorative hardware showrooms in North America.

K | TOP
KNOBBS



BUSTER + PUNCH
LONDON

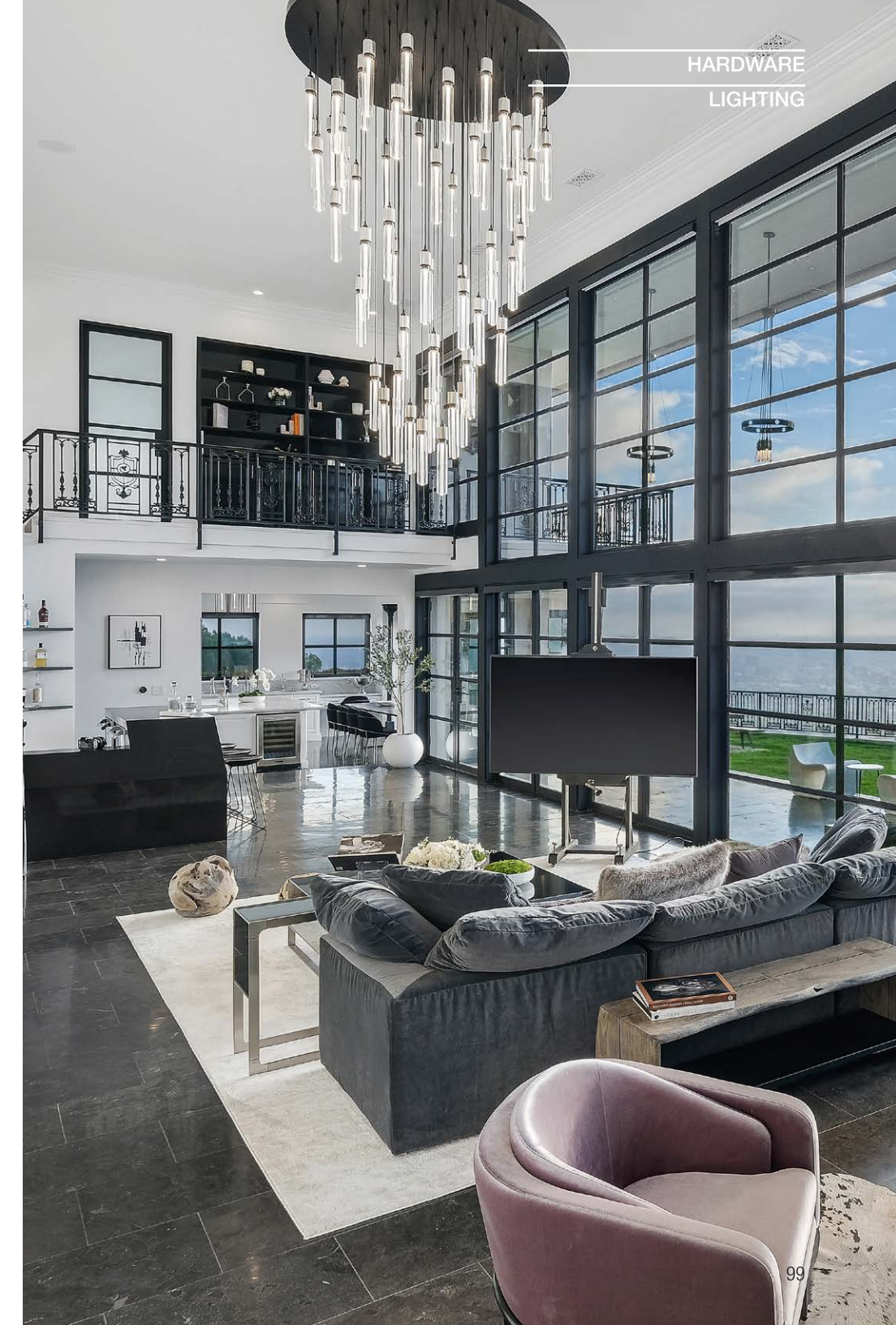
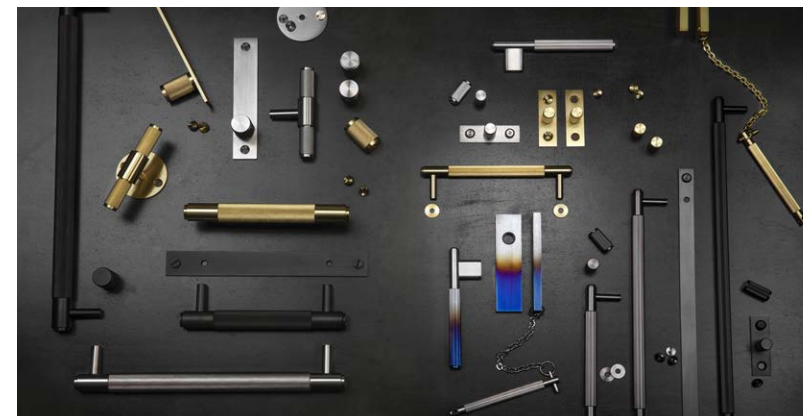


End Ordinary

Buster + Punch is a new type of one-stop home fashion label that brings together the influences of fashion, music and sub-culture.

Founded by architect and industrial designer Massimo Buster Minale, his East London garage was a design lab of sorts, where he built, designed and experimented with metalwork and custom motorbikes. He's since turned his obsession with solid metals into a successful fashion and lifestyle that has transformed the ordinary (and often forgotten) products of our daily lives (think light switches, door handles, furniture and LED light bulbs) into extraordinary home and lifestyle details for today's most fashion conscious consumers.

Solid metalwork, with a darker edge and a touch of London's fashion, music and sub-culture scene became the Buster + Punch calling card. Each new product debut reinforces their commitment to reinventing home's forgotten fittings for the fashion-conscious and pushing the edge of technology.





DESIGNER CREDIT: ANNE SNEED ARCHITECTURAL INTERIORS
PHOTOGRAPHY CREDIT: BRADY ARCHITECTURAL PHOTOGRAPHY

The desire to bring light to glass is irresistible

SkLO sits at the intersection of modern California design and centuries-old Czech glass tradition.

SkLO designs and manufactures handblown glass lighting from its studios in both Northern California and the Czech Republic. Every product is made with a deep appreciation for the richness of its organic material and the historical craft tradition it embodies.

Lighting is the ideal form for expressing the intersection of beauty and function. Products in the SkLO Light collection are individually crafted of solid brass and handblown glass. They strike a balance between refined simplicity and the organic nature of their materials.

SkLO designs demonstrate careful attention to detail, and a commitment to achieving the simplest expression of beauty. This belief in simplicity and design discipline is always balanced by a deep respect for the raw material, and closeness to the maker. There's an inherent primal brutality and unexpectedness in glassblowing, and in Czech glass in particular. Masters of the craft make manipulation of molten glass appear effortless, as they employ generations of skillful technique. The designs celebrate this process in their subtle irregularities, making each one a unique reflection of its long history.

SkLO was founded by husband and wife design team Karen Gilbert and Paul Pavlak, and visionary Pavel Hanousek. For Karen and Paul, SkLO reflects their shared philosophy about craft, while utilizing each of their individual skills. Karen's as an acclaimed craft artist and metalsmith, whose hands-on work integrates glass; and Paul's as a trained and practicing architect with a deep belief in the honesty of materials, expression of process, and importance of restraint.

SkLO





Tolomeo

Brought out in 1987 and designed for Artemide by Michele De Lucchi with Giancarlo Fassina, the Tolomeo was an immediate bestseller, consolidating a working relationship that continues to this day. Inspired by traditional balanced arm lamps like the famous Naska Loris, his challenge was to combine an iconic and “domestic” form with innovative technologies and materials, adapting it to a wide variety of uses and settings. Today it is a well-known symbol of the modern object, commonly seen in houses, offices and hotels, on the desks of architects and on photographic and even film sets.

An extension to the iconic Tolomeo family, **Tolomeo Mega** features the same arm-balancing system as the Tolomeo table lamp, combined with a selection of parchment or fabric shades, creating its own subfamily. **Tolomeo Mega** is available in table clamp, floor, wall and suspension versions.

Arrival

Arrival is a complete lamp family with dynamic, flowing shapes that sculpt light with delicate, graphic lines.

Branching out from a central base, each model has three arms that form a soft, organic geometric shape through a profile that is both light and structured. Each element has a section that leaves the aluminum profile visible from the outside while generating a light-diffusing surface inside.

The resulting elements blend into spaces with a presence that is discreet yet distinctive, thanks to the shape and quality of the softly diffused light.

The delicate and organically shaped arms of the lamp create a fluid design.

The collection includes two ceiling lamps of different sizes, a floor lamp and a table lamp available in brass and in black colors.

Artemide®





Goodman Medium Pendant
Thomas O'Brien

Visual Comfort

Since 1987, Visual Comfort has been the premier resource for signature designer lighting. For over 30 years, Visual Comfort has produced lighting with some of the most influential names in design using natural materials of exceptional quality and distinctive, hand-applied, living finishes. Visual Comfort offers a broad assortment of lighting featuring many prominent designs synonymous with high style and functionality.

Visual Comfort is a leader in the lighting industry with products of exquisite detail, superior production, and unrivaled range. Our total attention to design defines the quality of each light we make. We understand that lighting is one of the rare products linking interiors and exteriors together across every part of a project. Lighting adds texture and atmosphere to any space, and is the visual punctuation that influences how you read a room.

VISUAL COMFORT & Co.



ABOVE: The Melange Chandelier in Bronze
from Kelly Wearstler

LEFT: The Appareil Medium Lantern in
Polished Nickel from Kelly Wearstler

In addition to enhancing the overall aesthetic, good lighting helps us to see better and perform our daily routines with ease. From decorative to task, from accent to architectural, from contract to residential, we have the design continuity to help our customers with all their lighting requirements. We are proud to offer lighting that can create a complete world of coordinated design choices for a variety of lifestyles, project requirements, and budgets.

Featuring patented product from some of designs greatest minds, including Kelly Wearstler, Thomas O'Brien, and Lauren Rottet, Visual Comfort has become the number one lighting brand designed by designers, for designers.



The Fascio 24" Sconce in
Antique Brass from Lauren Rottet



Graydon Double Sconce
Thomas O'Brien

SLAMP

“Slamp was born with the aim of creating something new in the world of design: a company that offers quality lamps, able to mix the care of craftsmanship with the excellence of industrial production” Roberto Ziliani, (CEO and Founder of SLAMP)

Much like in a haute couture maison, every Slamp lamp undergoes a precise, transformative, creative ritual that metamorphoses a two-dimensional sheet into a three-dimensional shape through cold-cutting and hand-folding.

Every lamp is unique and recognizable, thanks to our technopolymers; noble, unbreakable materials that can be shaped into various decorative forms and combined with others to achieve almost impossible effects. Sustainability and recyclability have always been part of Slamp's DNA: products are cold-cutted to prevent the release of CO2 and other toxic emissions, and the extra cuttings are recycled every month. Since 2019, a portion of those are being made into beehives for bumblebees, that are essential for preserving biodiversity and guaranteeing pollination.

SLAMP:
THE LEADING LIGHT



DRUSA CEILING/WALL - WHITE BY ADRIANO RACHELE



CLIZIA SUSPENSION - FUMÉ BY ADRIANO RACHELE



LA VIE CEILING/WALL - WHITE BY ADRIANO RACHELE

Tech Lighting

Tech Lighting is the leading brand for modern decorative and specification grade architectural lighting. With a passion for innovation, original design and uncompromising quality, Tech Lighting delivers iconic and timeless indoor and outdoor lighting collections for the spaces in which people live, work, play, learn, shop and more.

Since its founding in 1987, Tech Lighting has continuously led the adoption of emerging technologies and challenged traditional norms in lighting. By collaborating closely with lighting and interior designers to understand their needs and solve their toughest challenges, Tech Lighting has gained broad recognition for balancing a passion for every design detail with an appreciation for the way fixtures illuminate a space. Their expansive portfolio can be used to outfit every lighting requirement inside and outside of a home, as well as a wide breadth of commercial applications.

 **TECH LIGHTING**



BAU LINEAR PENDANT – SEAN LAVIN

Generation Lighting

Generation Lighting combines a rich history of design experience with an aesthetic relevant to today. They remain strongly connected to interior designers and homeowners who desire a broad range of classic, tasteful, and elegant lighting solutions.

In 2019, Generation Lighting began partnering with a new generation of designers who are among the most influential trendsetters of their time. These partners, including the likes of Aerin Lauder, Kelly Wearstler, and Lauren Home by Ralph Lauren, offer unique collections inspired by beauty from the past, functional needs from the present, and imaginative concepts of the future. Generation lighting is proud to have the privilege of bringing these designer visions to life, and the result is lighting that will remain timeless for generations to come.



FLYNN DETAIL SHOT



FLYNN FLUSH MOUNT
LAUREN BY RALPH LAUREN

GENERATION LIGHTING



LIGHTING

FLYNN CHANDELIER
LAUREN BY RALPH LAUREN



MAVERICK WITH BURNISHED
BRASS FINISH KIT



Monte Carlo Fan Collections

Founded in 1996, Monte Carlo specializes in trend inspired, fashion forward fans and accessories that are available in a wide variety of styles, sizes, and finishes to meet any budget. From a large portfolio of minimalist, modern fans that integrate with their surroundings, to versatile transitional fans developed in partnership with acclaimed designers, Monte Carlo offers complete collections so that anyone can outfit multiple rooms in a space with their chosen look.

Their beautiful, well-engineered fans and state-of-the-art controls reflect the values of Monte Carlo Fan Collections — fashionable design, exceptional performance and unprecedented customer service. Enhance the atmosphere and improve the air quality in your space with Monte Carlo Fans; delivering design in motion.

MONTE CARLO
FAN COLLECTIONS

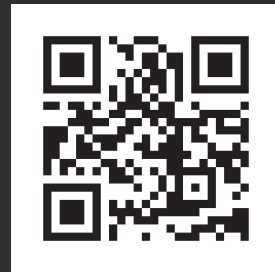
Need more inspiration?

Use your smartphone to scan the QR codes below for more information or visit our website to view our products, latest news, weekly inspiration, amazing offers and much more.



CANTU WEBSITE

<https://www.cantubathrooms.com/>



CANTU BLOG

<https://cantubathrooms.net/>



Follow us @cantubathrooms

CANTU

8351 Ontario Street
Vancouver, BC V5X 3E8

TF 1.800.910.1252

T 604.688.1252

F 604.688.1232

www.cantubathrooms.com

info@cantubathrooms.com

[@cantubathrooms](#)